

# Department of Health Orientation

## Senate and House Human Services Committees

### 2017 Legislative Session



Arvy Smith, CPA MPA  
Co Acting State Health Officer



**NORTH DAKOTA**  
DEPARTMENT *of* HEALTH

# Impact of Public Health on Lifespan

- From 1900-1999 the lifespan of Americans increased approximately 30 years
  - 5 years due to advances in clinical medicine
  - 25 years due to public health



# Life Expectancy

- For the first time since 1993, life expectancy declined from 78.9 in 2014 to 78.8 in 2015
- Good news the death rate from cancer has declined probably due to less tobacco use and more early cancer screenings

- Source: [https://www.washingtonpost.com/national/health-science/us-life-expectancy-declines-for-the-first-time-since-1993/2016/12/07/7dc7b4-bc93-11e6-91ee-1addfe36cbe\\_story.html?utm\\_term=.a5d41c44dcc8](https://www.washingtonpost.com/national/health-science/us-life-expectancy-declines-for-the-first-time-since-1993/2016/12/07/7dc7b4-bc93-11e6-91ee-1addfe36cbe_story.html?utm_term=.a5d41c44dcc8)

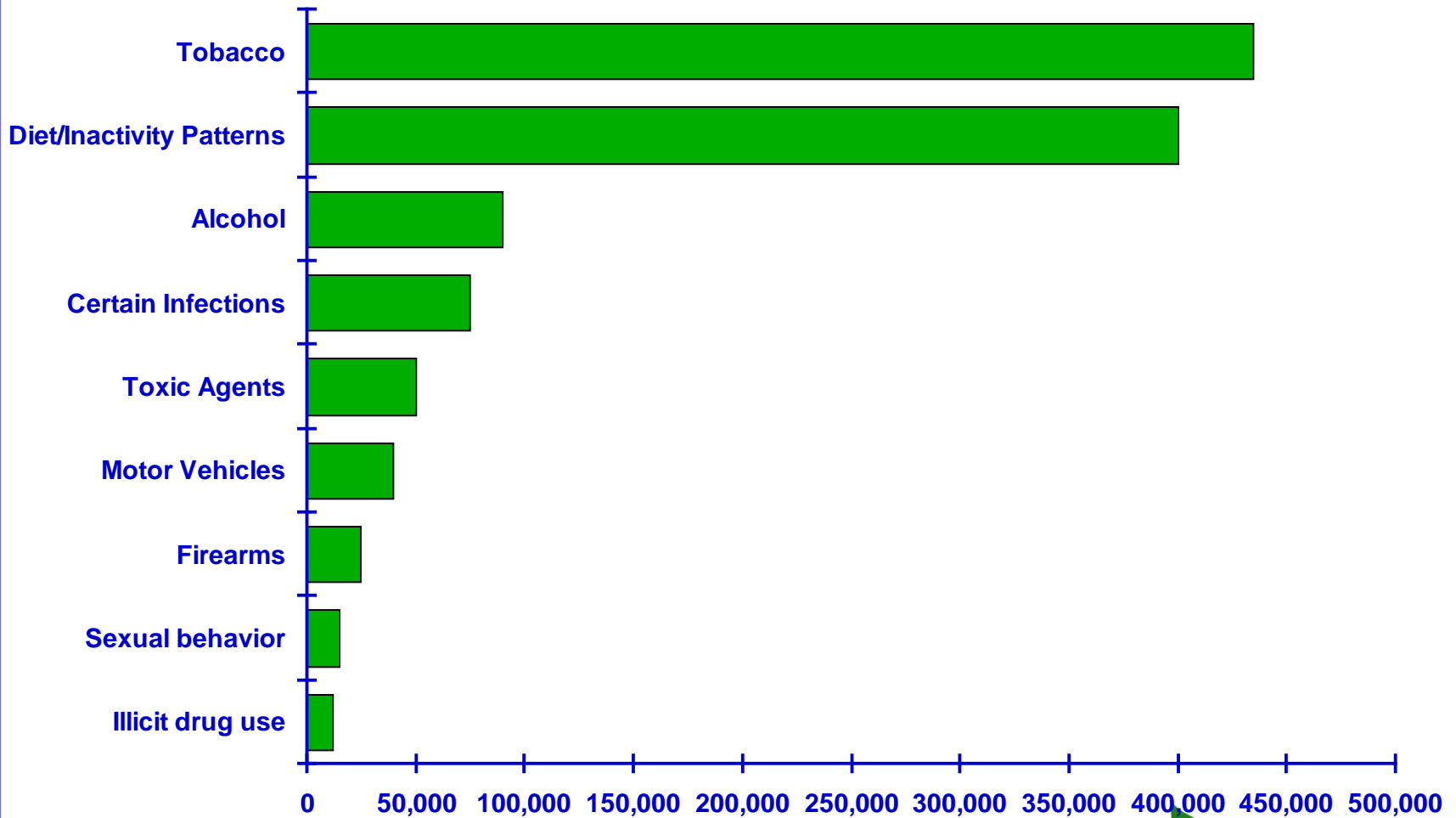


# Major Causes of Death in ND

- Heart Disease
- Cancer
- Alzheimer's
- COPD
- Injury
- Stroke
- Diabetes
- Influenza and pneumonia
- Suicide

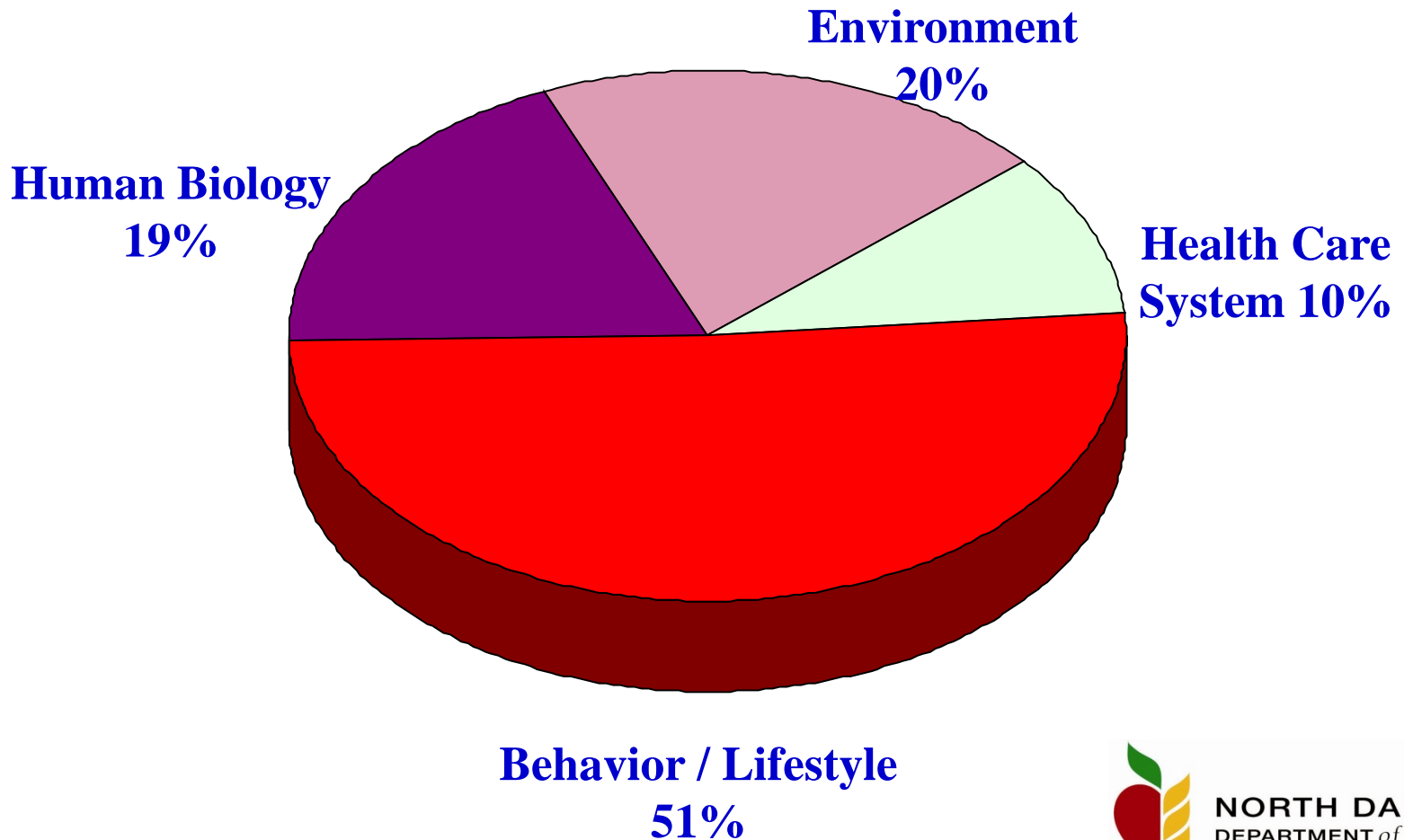


# Real Causes of Death



# Factors Contributing to Premature Death before Age 75

---



# Differences Between Clinical Medicine and Public Health

## Clinical Medicine

Secondary Prevention – Curative Care

Tertiary Prevention - Rehabilitation

Person to Person

Disease  
Orientation

## Public Health

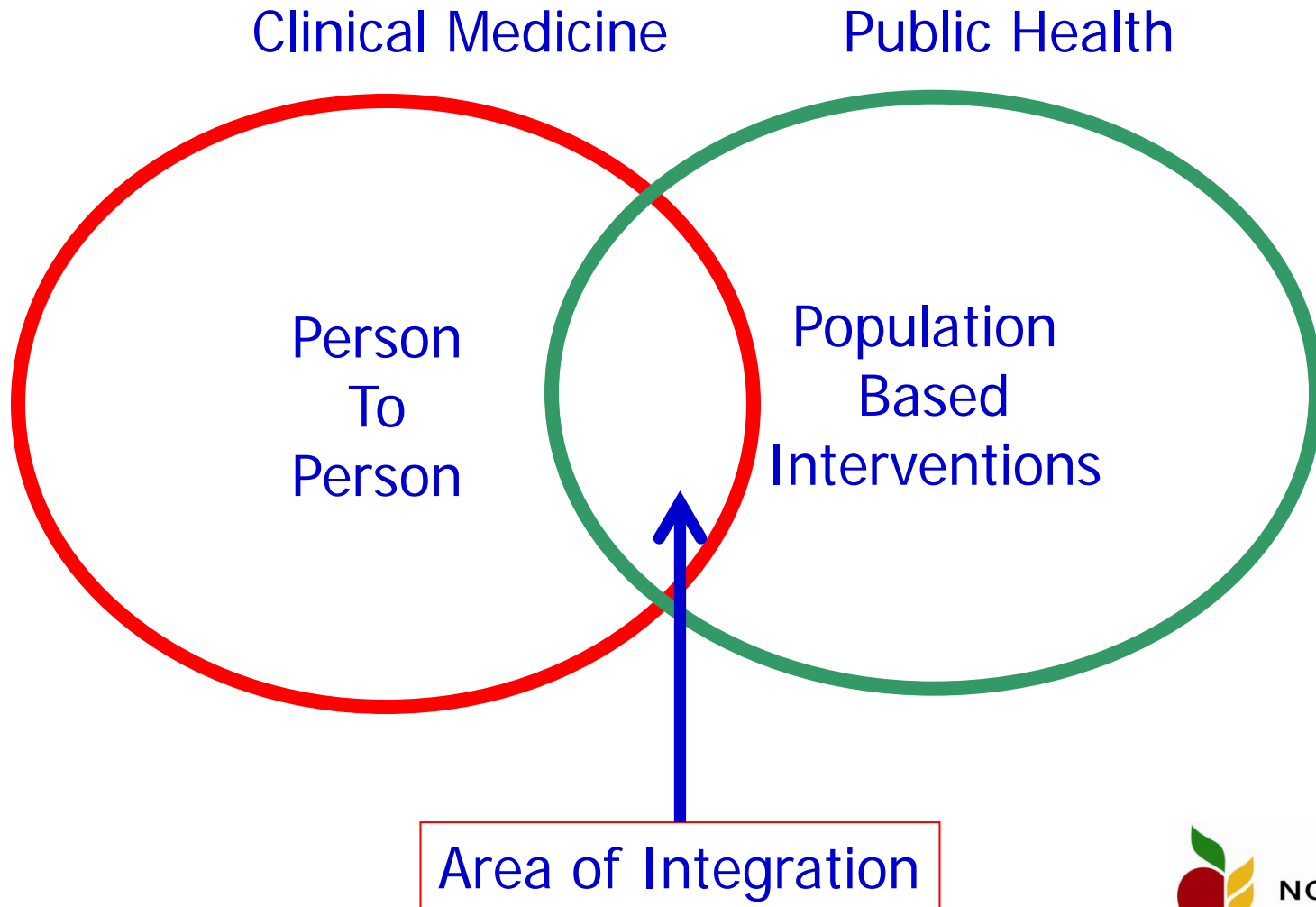
Primary Prevention – Decrease  
Risk Factors

Population Based

Prevention  
Of  
Disease



# Integration of Public Health and Primary Care



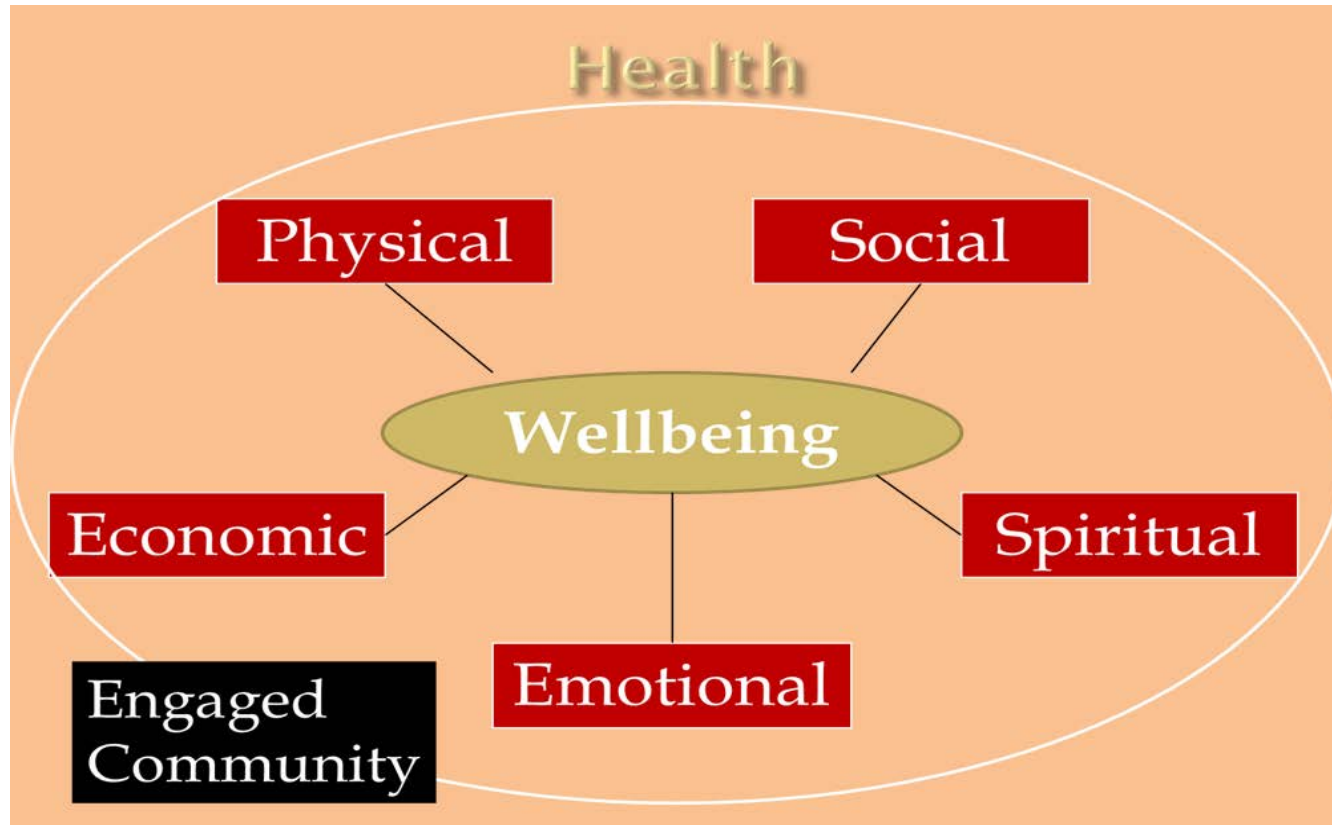


# Why Integrate?

- Limited funding - need innovation for sustainability
- Address the whole health of the person
- Expand impact

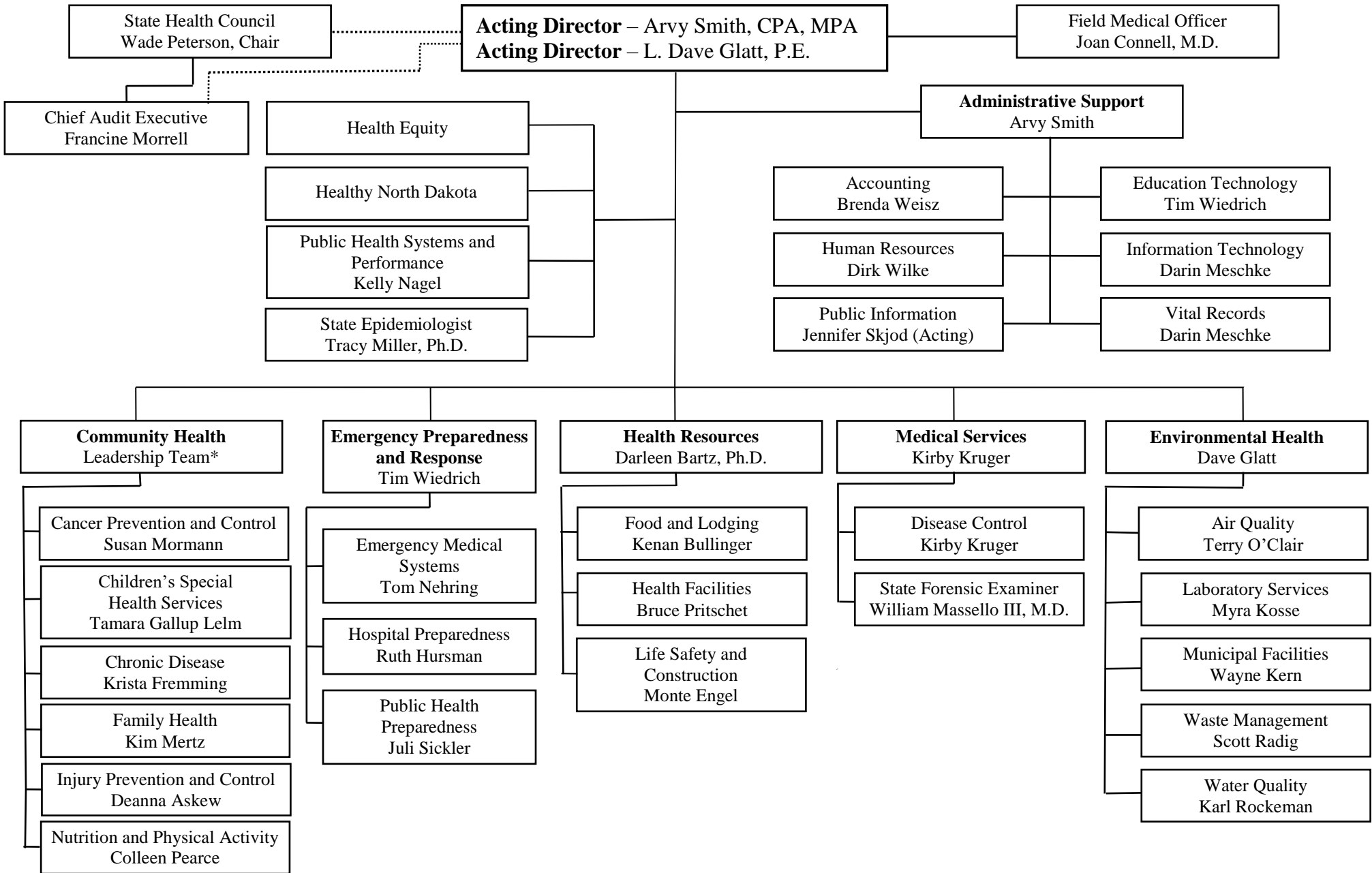


# Definition of Health



Adapted from the World Health Organization's definition of health – "The state of complete physical, mental and social wellbeing, not just absence of disease".





\*The six division directors share responsibility for management of the Community Health Section.